



AERIGOLD[®]
ELECTRICALS

AN ISO 9001:2015 CERTIFIED CO.



Connect
with **Quality**

PRODUCT CATALOGUE
2024



AERIGOLD[®]

ELECTRICALS

AN ISO 9001:2015 CERTIFIED CO.

CEILING PLATE

3.5" POLO CEILING PLATE



CODE: AG0025
3.5" CEILING
PLATE 50 PCS.

4.25" POLO CEILING PLATE



CODE: AG0026
4.25" CEILING PLATE 100 PCS.
CODE: AG0027
4.25" CEILING PLATE 100 PCS.
GLOW GREEN

5" POLO CEILING PLATE



CODE: AG0028
5" CEILING
PLATE 50 PCS.

7" POLO CEILING PLATE



CODE: AG0029
7" CEILING
PLATE 50 PCS.



AERIGOLD[®]

ELECTRICALS

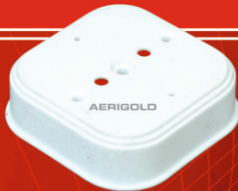
AN ISO 9001:2015 CERTIFIED CO.

CEILING & DECORE PLATE



7" VAYO CEILING PLATE

CODE: AG0030
7" MODULAR
CEILING FAN PLATE 10 PCS.



SQUARE JUNCTION BOX

CODE: AG0044
SQUARE
JUNCTION BOX 50 PCS.



4.5" X 4.5" VAYO DECORE PLATE

CODE: AG0054
4.5" X 4.5" 20 PCS.
DECORE PLATE
AVAILABLE IN:
WHITE & PARROT BLUE COLOUR



4.5" X 7.5" VAYO DECORE PLATE

CODE: AG0055
4.5" X 7.5" 10 PCS.
DECORE PLATE
AVAILABLE IN:
WHITE & PARROT BLUE COLOUR



LAMP HOLDERS

ZOOM LAMP HOLDERS



CODE: AG0033
ANGLE HOLDER 20 PCS.

CODE: AG0034
BATTEN HOLDER 20 PCS.

POLO LAMP HOLDERS



CODE: AG0037
ANGLE HOLDER 20 PCS.

CODE: AG0038
BATTEN HOLDER 20 PCS.

SLEEK ANGLE HOLDER



CODE: AG0032
ANGLE HOLDER 20 PCS.

BINGO LAMP HOLDERS



CODE: AG0039
ANGLE HOLDER 10 PCS.

CODE: AG0040
BATTEN HOLDER 10 PCS.



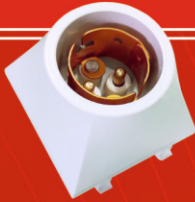
AERIGOLD[®]

ELECTRICALS

AN ISO 9001:2015 CERTIFIED CO.

HOLDERS & CEILING ROSE

MODULAR ANGLE HOLDER



CODE: AG0031
ANGLE HOLDER 30 PCS.

PENDENT HOLDER



CODE: AG0035
SHAN P. HOLDER 30 PCS.

CODE: AG0036
POLO P. HOLDER 30 PCS.

2 PIN / MALE FEMALE



CODE: AG0023
2 PIN TOP 30 PCS.

CODE: AG0024
MALE FEMALE 20 PCS.

CEILING ROSE



CODE: AG0042
POLO CEILING ROSE 40 PCS.

CODE: AG0043
JUMBO CEILING ROSE 40 PCS.

CODE: AG0041
BINGO CEILING ROSE-SQ. 10 PCS.



AERIGOLD[®]

ELECTRICALS

AN ISO 9001:2015 CERTIFIED CO.

LED FOOT LIGHT

GLORA FOOT LIGHT



CODE: AG0101

4 M LED FOOT LIGHT

10 PCS.

SANEETE FOOT LIGHT

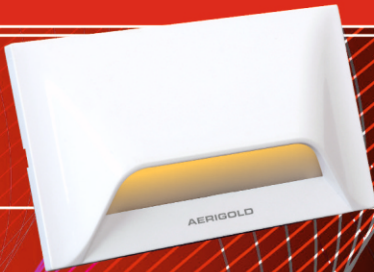


CODE: AG0102

4 M LED FOOT LIGHT

20 PCS.

FOOTCEE FOOT LIGHT



CODE: AG0100

4 M LED FOOT LIGHT

20 PCS.

WHITE	W.W	BLUE	AMBER	PINK
ICE BLUE	RED	GREEN	3-IN-1 RED-BLUE-PINK	3-IN-1 WHITE-W.W-N.W



AERIGOLD 5



AERIGOLD[®]

ELECTRICALS

AN ISO 9001:2015 CERTIFIED CO.

6A. & 16A. PLUG TOP



EURO 3 PIN PLUG TOP

CODE: AG0052
6A. 3 PIN PLUG TOP 20 PCS.
(POLYCARBONATE)



FLORA 3 PIN PLUG TOP

CODE: AG0053
16A. 3 PIN PLUG TOP 10 PCS.
(POLYCARBONATE)



ROMAN 3 PIN PLUG TOP

CODE: AG0050
6A. 3 PIN PLUG TOP 20 PCS.
(BACKELITE)



ROMAN 3 PIN PLUG TOP

CODE: AG0051
16A. 3 PIN PLUG TOP 10 PCS.
(BACKELITE)



AERIGOLD[®]
ELECTRICALS

AN ISO 9001:2015 CERTIFIED CO.

MULTI PLUGS



SYDON 3 PIN MULTI PLUG

CODE: AG0047
6A. SYDON
MULTI PLUG 20 PCS.



STELLA 3 PIN MULTI PLUG

CODE: AG1001
6A. 3 PIN
MULTI PLUG
WITH INDICATOR 10 PCS.



SILVER 3 PIN MULTI PLUG

CODE: AG0048
6A. 3 PIN
MULTI PLUG
WITH INDICATOR 20 PCS.



SHAN BED SWITCH

CODE: AG0057
SHAN
BED SWITCH 30 PCS.
2A. 240V~



AERIGOLD[®]

ELECTRICALS

AN ISO 9001:2015 CERTIFIED CO.

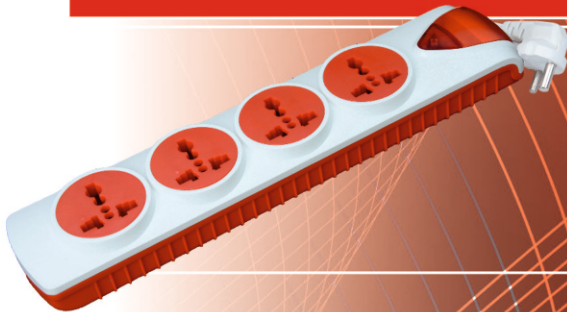
POWER STRIP



STEAM POWER STRIP

CODE: AG0065
4 SWITCH+4 INTEL SOCKET
WITH INDICATOR 1.5 MTRS.

5 PCS.



AUDI POWER STRIP

CODE: AG0066
4 SWITCH+4 INTEL SOCKET
WITH INDICATOR 1.5 MTRS.

CODE: AG0067
4 SWITCH+4 INTEL SOCKET
WITH INDICATOR 4 MTRS.
5 PCS.



NEXA POWER STRIP

CODE: AG0068
4 SWITCH+4 INTEL SOCKET
WITH INDICATOR 1.5 MTRS.

CODE: AG0069
4 SWITCH+4 INTEL SOCKET
WITH INDICATOR 4 MTRS.
5 PCS.



**SUITABLE FOR
ALL TYPES OF PLUGS**

AERIGOLD 8



AERIGOLD[®]

ELECTRICALS

AN ISO 9001:2015 CERTIFIED CO.

PIXAL

Polycarbonat Series

16A. SERIES

3-IN-1



CODE: AG0015
6A./16A. 5 PCS.
SWITCH SOCKET
COMBINED WITH J. BOX

5-IN-1



CODE: AG0017
6A./16A. 5 PCS.
SWITCH SOCKET
COMBINED WITH FUSE
& INDICATOR WITH J. BOX

6A. 3-IN-1 (DOUBLE)



CODE: AG0018
6A. DOUBLE 5 PCS.
SWITCH SOCKET
COMBINED WITH J. BOX

16A. 3-IN-1 (DOUBLE)



CODE: AG0019
6A./16A. DOUBLE 5 PCS.
SWITCH SOCKET
COMBINED



AERIGOLD[®]

ELECTRICALS

AN ISO 9001:2015 CERTIFIED CO.

MCB D.B. BOXES



1&2 WAY MCB ENCLOSER

CODE: AG0058
1 & 2 WAY
ENCLOSER 10 PCS.



2&4 WAY MCB ENCLOSER

CODE: AG0059
2 & 4 WAY
ENCLOSER 10 PCS.



4&6 WAY MCB ENCLOSER

CODE: AG0060
4 & 6 WAY
ENCLOSER 5 PCS.



6 - 10 WAY MCB ENCLOSER

CODE: AG0061
6 - 10 WAY
ENCLOSER
(DOUBLE DOOR) 1 PCS.

AERIGOLD 10



AERIGOLD[®]
ELECTRICALS

AN ISO 9001:2015 CERTIFIED CO.



**ALL IN
ONE**



DOUBLE S.S. COMBINED

6/16A. 2 UNI. SOCKET & SWITCH WITH INDICATOR

ALL IN ONE

CODE: AG0020
DOUBLE S.S. COMB. 5 PCS.
6A./16A. 2 UNI. SOCKET
SWITCH WITH INDICATOR
WITH J. BOX

AERIGOLD 11



AERIGOLD[®]
ELECTRICALS

AN ISO 9001:2015 CERTIFIED CO.

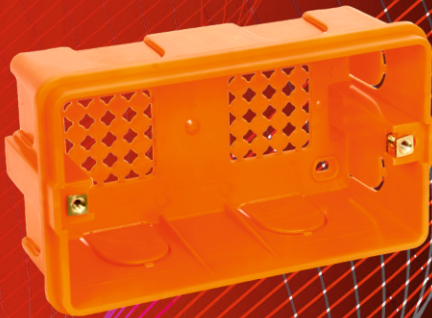
Coming Up
MODULAR MOUNTING BOX



SURFACE BOX



METAL BOX



CONCEALED BOX

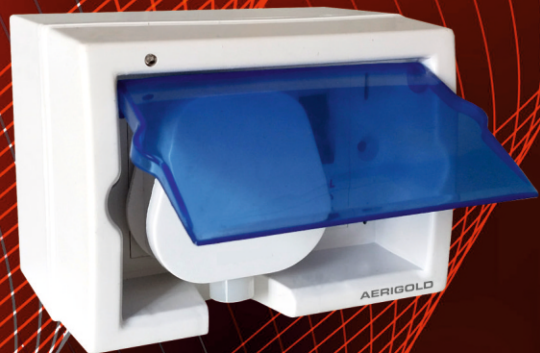


AERIGOLD[®]
ELECTRICALS

AN ISO 9001:2015 CERTIFIED CO.

Coming Up

**AC BOX UNIT
WITH...
MCB, INDICATOR &
HEAVY DUTY 16A. 3 PIN
PLUG TOP (WITH BOX)**



AERIGOLD 13



AERIGOLD[®]
ELECTRICALS

AN ISO 9001:2015 CERTIFIED CO.

Coming Up
MODULAR GANG BOX



MODULAR GANG BOX

AG0073	1 MODULE GANG BOX	20 PCS.
AG0074	2 MODULE GANG BOX	10 PCS.
AG0075	3 MODULE GANG BOX	10 PCS.
AG0076	4 MODULE GANG BOX	10 PCS.
AG0077	6 MODULE GANG BOX	10 PCS.
AG0078	8 HZ. MODULE GANG BOX	10 PCS.
AG0079	8 V. MODULE GANG BOX	10 PCS.
AG0080	12 MODULE GANG BOX	5 PCS.
AG0081	16 MODULE GANG BOX	5 PCS.



AERIGOLD[®]
ELECTRICALS

AN ISO 9001:2015 CERTIFIED CO.

Coming Up

JUMBO MODULAR INDUSTRIAL EXTENTION BOX



**SUITABLE FOR MOTOR GARAGE &
INDUSTRIAL USE**

JUMBO INDUSTRIAL EXTENTION BOX

CODE: AG0021

EXTENTION BOX BUILT WITH 2 6A. SOCKET
1 SWITCH, LAMP HOLDER AND INDICATOR
(WITHOUT WIRE)

5 PCS.

AERIGOLD 15



AERIGOLD[®]
ELECTRICALS

AN ISO 9001:2015 CERTIFIED CO.

16A. SWITCHES / SOCKET J. BOX



16A. 1 WAY GANG BOX

CODE: AG0071
SUITABLE FOR PIXAL
16A. SWITCH & SOCKET
20 PCS.



16A. 2 WAY GANG BOX

CODE: AG0072
SUITABLE FOR PIXAL
16A. SWITCH & SOCKET SET
12 PCS.



AERIGOLD[®]

ELECTRICALS

AN ISO 9001:2015 CERTIFIED CO.



AERIGOLD ELECTRICALS

Mumbai, Maharashtra (INDIA)

Email: aerigoldelectricals@gmail.com